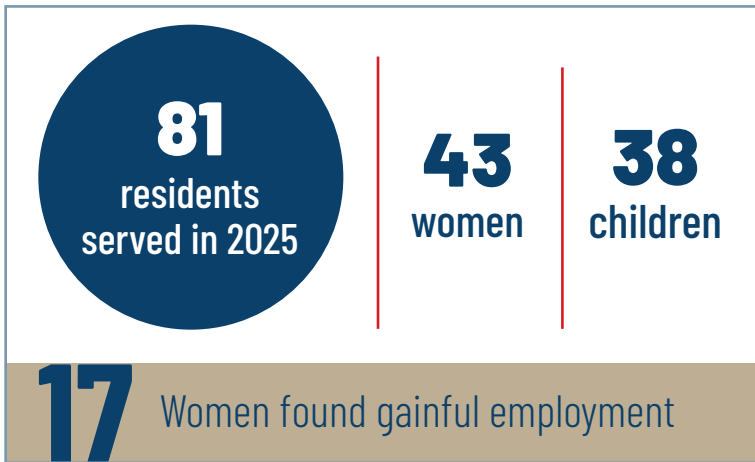


2025 IMPACT REPORT



We are deeply grateful to our loyal champions whose support allows us to care for women and children through our emergency and transitional housing program.

FINDING HOPE AND CHANGE



2 Women graduated from emergency to transitional program



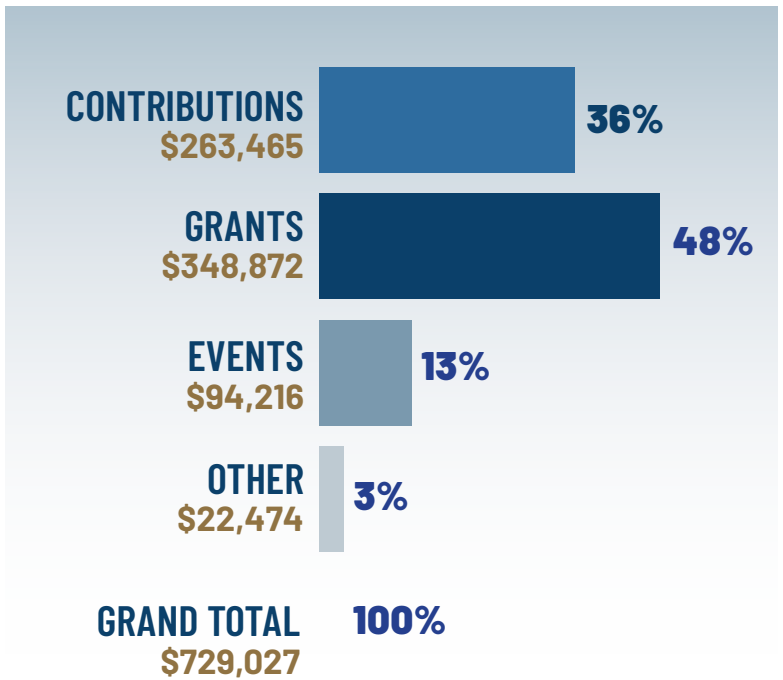
SERVING OUR RESIDENTS



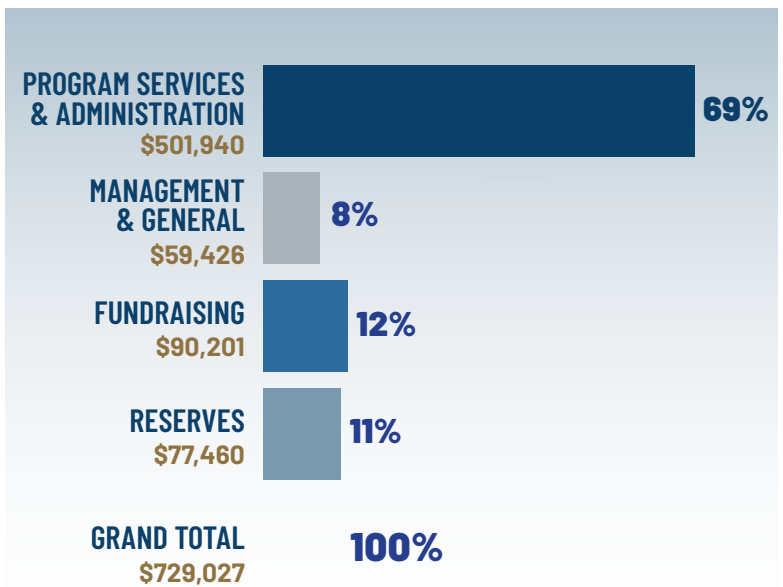
15 MENTORS



SOURCES OF INCOME:



HOW YOUR DONATIONS ARE USED:



"Walking through the doors of Gabriel's House, my daughter and I felt a deep sense of peace." – Sandra